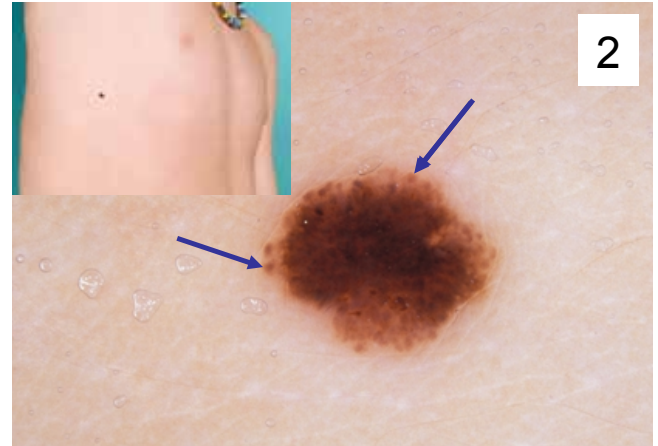


DERMATOSCOPIE

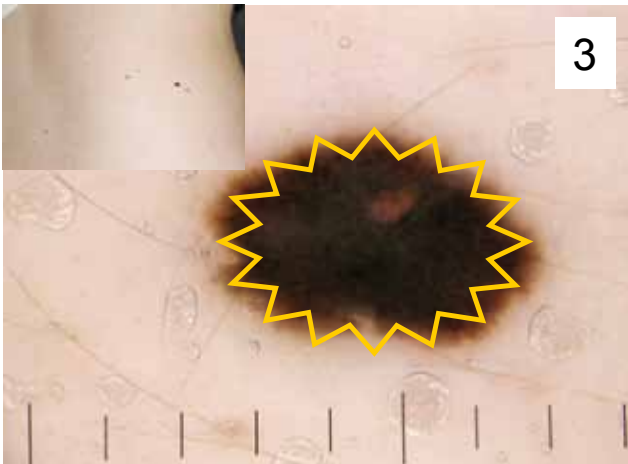
OPLOSSING: NOONAN



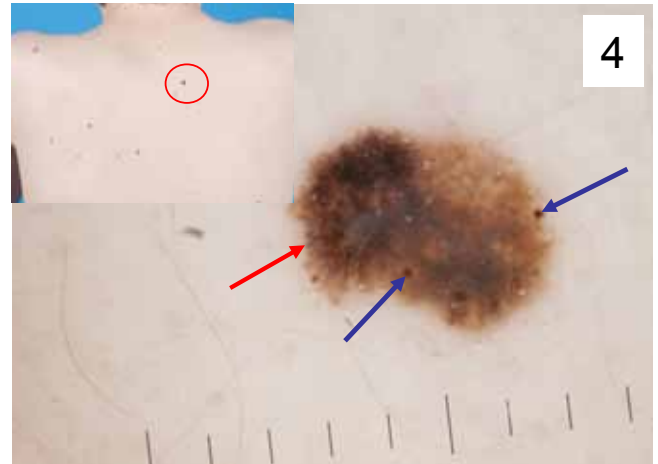
1
Naevus dysplasticus, lichte atypie (N).
Melanocyttaire kenmerken: pigmentnetwerk.
Symmetrie.



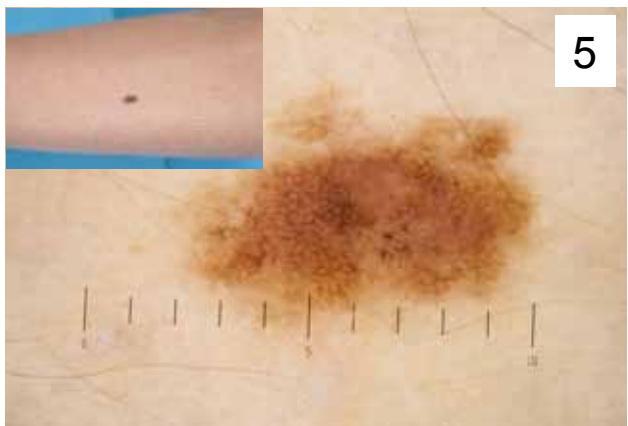
2
Spitz naevus (O). Melanocyttaire kenmerken:
globules in de periferie →.



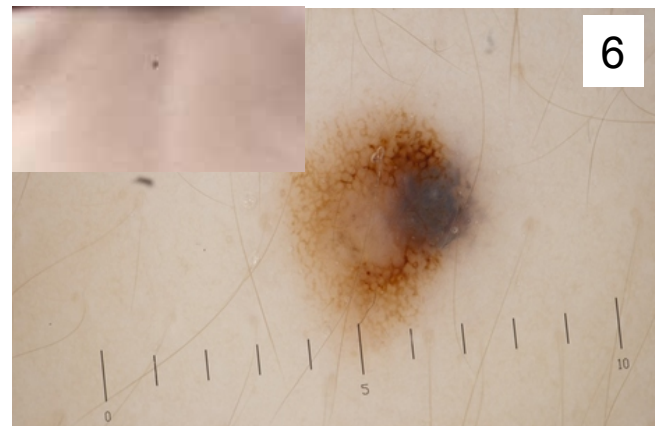
3
Spitz naevus (O). Melanocyttaire kenmerken:
streaks. Starburst patroon.



4
Naevus dysplasticus (N), matige atypie.
Melanocyttaire kenmerken: globules →.
Asymmetrie, grijze waas, pseudopods →.



5
Naevus naevocellularis (A). Melanocyttaire
kenmerken: pigmentnetwerk (regelmatig).



6
Blue en true naevus (N). Melanocyttaire kenmerken:
pigmentnetwerk, homogeen blauwe pigmentatie.